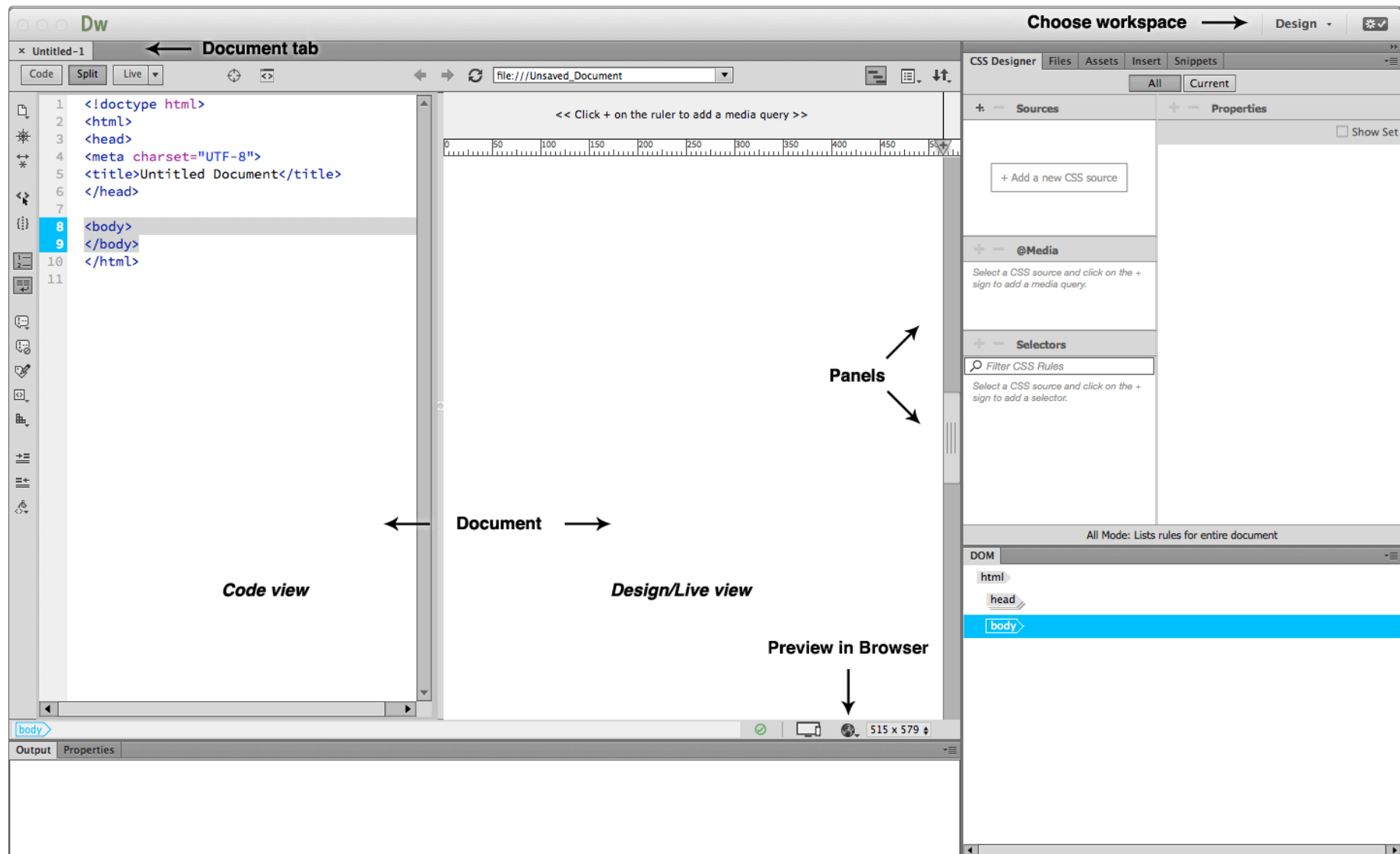


Dreamweaver interface (CC 2015+)

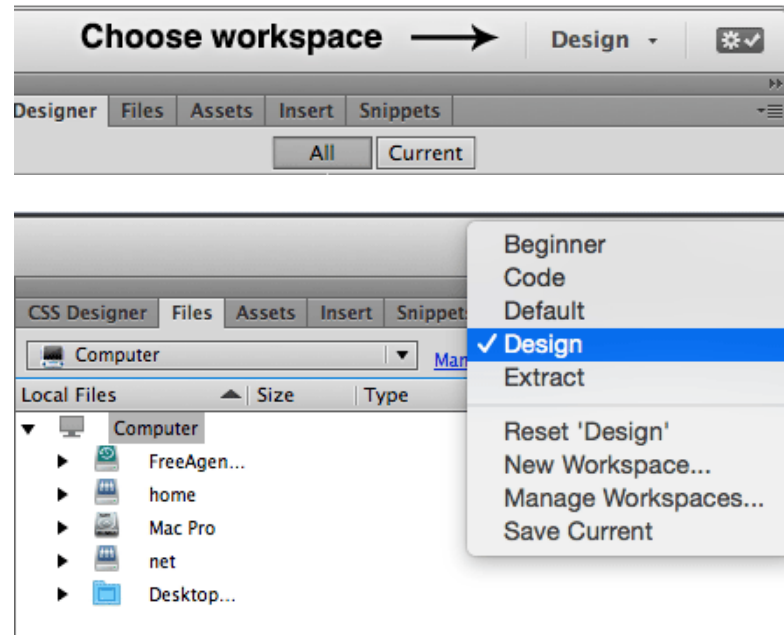
nigelbuckner 2015



Workspace

Choose your workspace from the top right. Clicking here will reveal a list of options. *Design* is a general purpose all-around workspace.

You may find the panels in DW have been re-arranged by a previous user. To set them back to the default position, select the workspace and choose the reset option further down in the list.



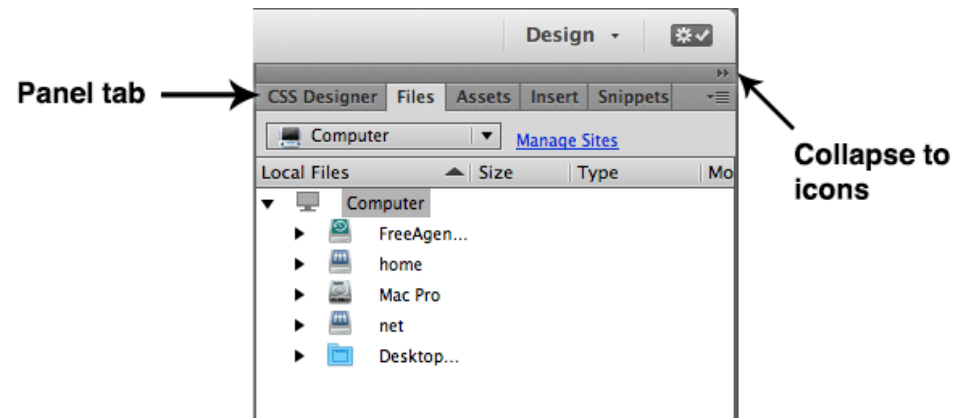
Panels

To reveal a panel, click on the panel tab.

To collapse a panel, double-click on the panel tab.

A panel group can be collapsed to icons/buttons by clicking on the small double headed arrow icon to the top right of the panel group.

New or closed panels can be opened from the *Window* menu (at top of screen).



Document workspace

There are several options for viewing an open document. These can be selected from the *Document Toolbar* (View > Toolbars > Document) at the top of the document workspace:

Code: Displays the code for the open document

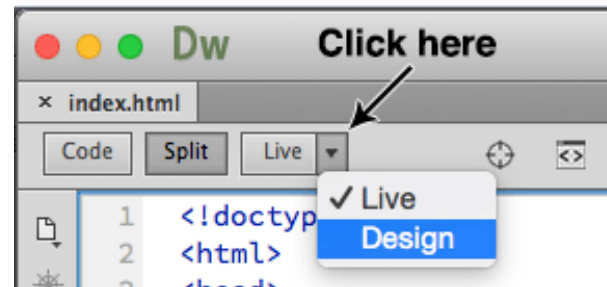
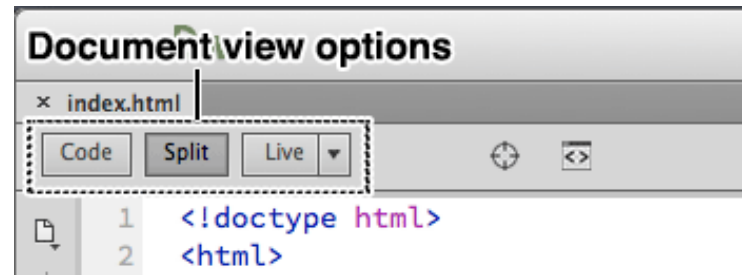
Split: Displays the Code and a visual of the page

Design or *Live*: Shows a visual representation of the page

It is possible to toggle between *Live* and *Design* views by clicking on the small button beside the Live/Design label.

Design view: Shows outlines revealing elements and structures that are used in the page. Also allows direct editing of the page from the visual side. This is especially useful when editing text, inserting images or adding links.

Live view: This displays a browser simulation of what the page looks like. Removes hidden elements such as guides etc., renders most CSS styles and enables dynamic elements to function (expanding menus, slideshows and so on). Limited features for directly editing the page from the visual side.



Viewing in a browser

To view a web page in a browser click on the Preview button at the base of the document window. Alternatively go to *File > Preview in Browser*. Either method presents a list of available installed browsers.

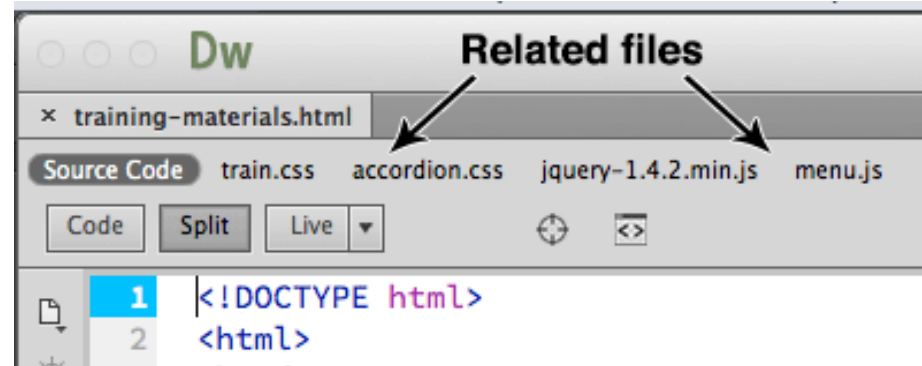
When previewing you will be requested to save the file. Saving is required to view the page correctly.



Related files

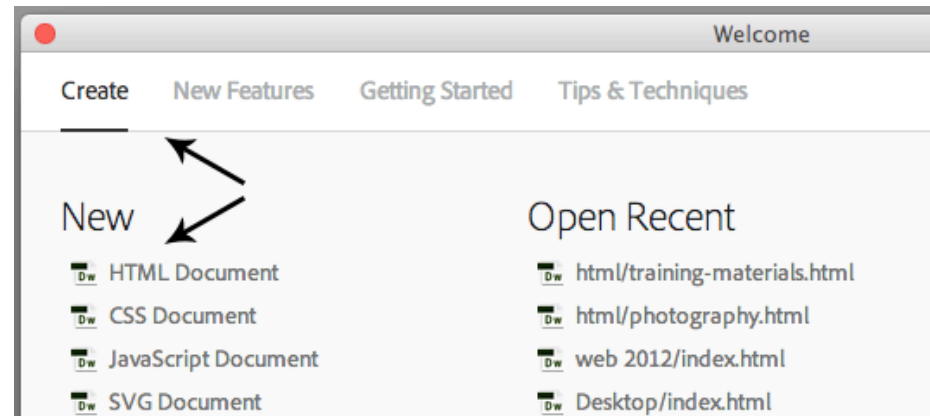
Related files are documents that are linked to the web page. These are necessary for the correct display of elements in the page. Typically, these will be CSS documents (style sheets) for the rendering of the page and JS documents (JavaScript) for dynamic elements (expanding menus, slideshows and so-on).

If the web page has related files, they will be displayed beneath the document tab. Clicking on these will replace the Source Code (HTML) in the Code view of the document. To go back to the HTML for the page, click on Source Code.



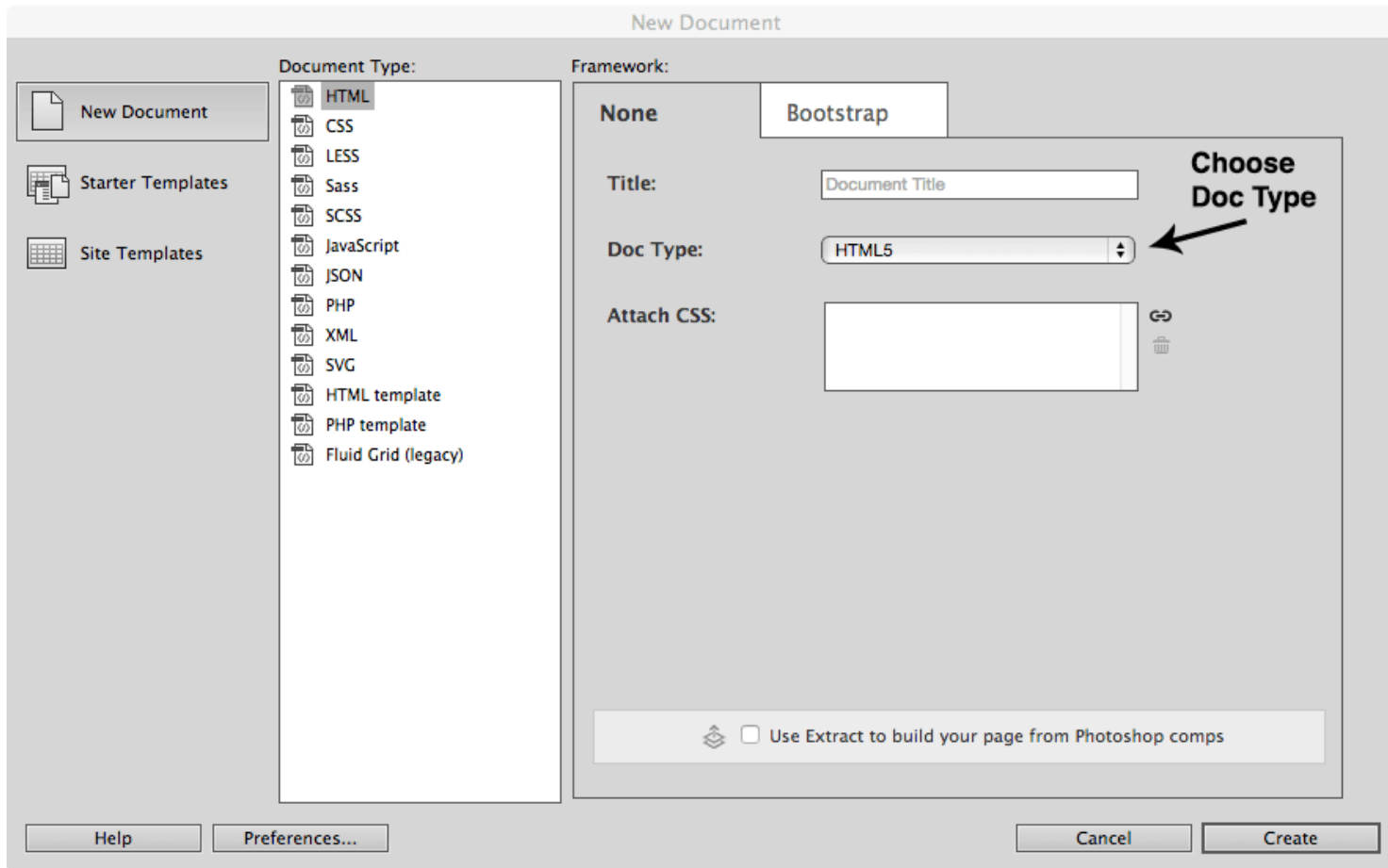
New document

A new HTML document can be created from the Welcome Screen:



New document

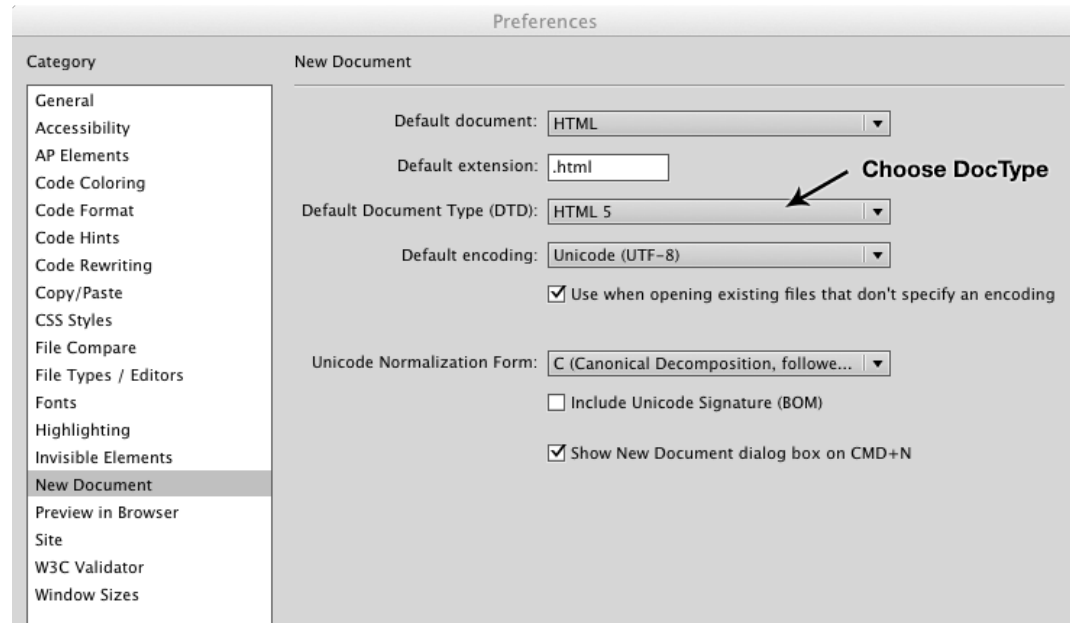
Alternatively, go to *File > New* which opens the new Document dialogue:



This provides an option to determine the *Doc Type* for the document (which version of HTML).

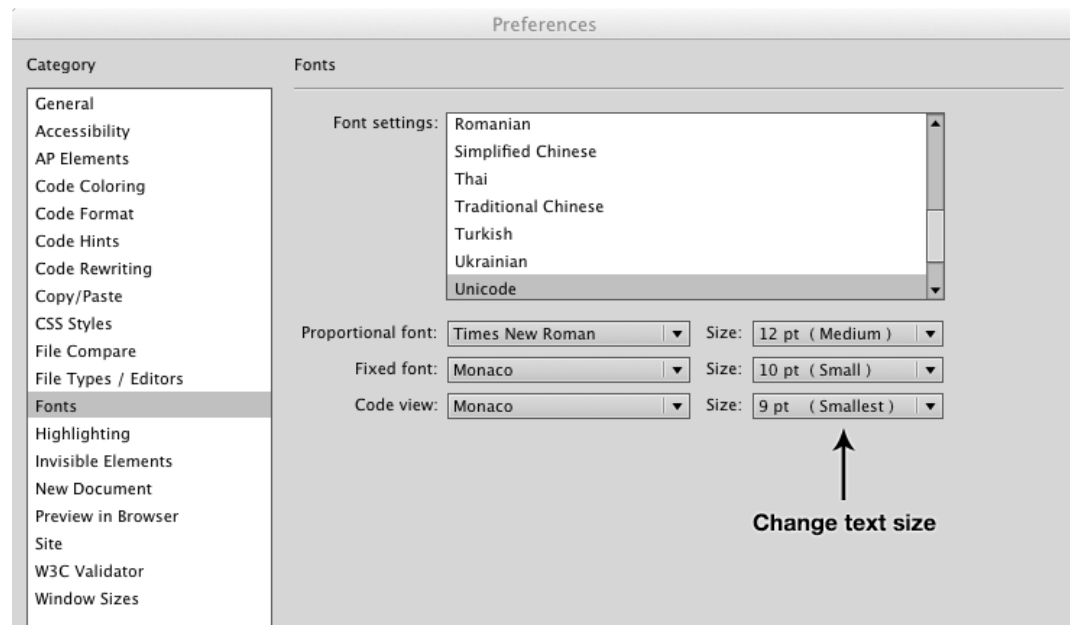
Doc Type Preferences

The default document type can be set from the application Preferences:



Preferences for text size in Code view

The size of the text in Code view can be set from the Preferences.



Preferences for Code Colouring

The code colour can be change from the Code Colouring category and choosing one of the preset themes.

Custom colouring can also be done from here.

